

# *Swedish Lace Baby Cloche & Booties Set*

Pattern 1200



[www.mistialpaca.com](http://www.mistialpaca.com)



# Baby Hat & Booties

Pattern 1200

Designed by: Karen D. Kendrick-Hands

## Finished measurements

| Sizes              | S (newborn) | L (3-6 mo) |
|--------------------|-------------|------------|
| <b>Hat</b>         | 13 in       | 16         |
| Circumference      | 33 cm       | 40.5       |
| <b>Hat</b>         | 5.75 in     | 6.75       |
| Length             | 14.5        | 17         |
| <b>Booties</b>     | 4 in        | 5.5        |
| Foot Circumference | 10 cm       | 14         |
| <b>Booties</b>     | 3 in        | 3.25       |
| Foot Length        | 7.5 cm      | 8.5        |

## Yarn

Misti Alpaca Tonos Pima Silk (83% pima cotton/17% silk) 100 g = approx 327 yards/ 300 meters), shown in color Shell Beach  
1 hank

## Needles

U.S. 2 (2.75 mm), 16 in/40 cm circular and set of 5 double pointed needles (dpns), or size necessary to obtain gauge  
U.S. C-2 (2.5mm) crochet hook

## Notions

Locking marker  
Stitch markers (optional)  
Scrap yarn  
Tapestry needle  
Ribbon for booties (optional)

## Gauge/Tension

approx 26 sts and 37 rnds = 4in/  
10cm in Swedish Lace Pattern

## Knitting Notes

The hat is begun at the center of the crown on double pointed needles. Change to the circular needle as the number of stitches permits.

Stitch markers can be used to separate each repeat of the pattern. Additional markers can be placed across the round as the number of stitches is increased and additional repeats are added. Make sure to slip each marker as you work across each round.

Slip stitches knitwise (kwise) unless otherwise instructed.

The Backward Loop method is used to increase stitches to shape the crown of the hats; refer to the instructions below in the Stitch Glossary if you are not familiar with this method. Use this method to increase when you see the abbreviation M1 (make 1).

# Baby Hat & Booties

Pattern 1200

## Stitch Glossary

**M1 (backward loop inc):** Hold yarn as for a long tail cast-on, insert right needle under loop on thumb and slip yarn from fingers, and tighten.

**ssk:** slip 2 stitches knitwise, one at a time, to right needle, place the 2 slipped stitches back onto left needle, and knit them together through the back of the loops.

**Swedish Lace Pattern for Hats** (multiple of 7 sts)

**Rnd 1:** \*K2, k2tog, yo, k1, p2; rep from \*.

**Rnd 2:** \*K1, k2tog, yo, k2, p2; rep from \*.

**Rnd 3:** \*K2tog, yo, k3, p2; rep from \*.

**Rnd 4:** \*K5, p2; rep from \*.

**Rnd 5:** \*K1, yo, ssk, k2, p2; rep from \*.

**Rnd 6:** \*K2, yo, ssk, k1, p2; rep from \*.

**Rnd 7:** \*K3, yo, ssk, p2; rep from \*.

**Rnd 8:** \*K5, p2; rep from \*.

Rep Rnds 1 – 8 for pattern.

## To Knit

### Hat

With dpns, CO 12 (14) sts using the Winding On Cast-on (see instructions at end of pattern), leaving approx 18in/ 45.5cm tail after slip knot.

**Foundation row:** \*K1, p1; rep from \* to end.

Arrange sts as follows: Needle 1, 4 (6) sts; Needle 2, 4 (4) sts; and Needle 3, 4 (4) sts. Join to work in the rnd, being careful not to twist sts. Place locking marker for beg of rnd in CO edge.

Work from instructions below or from Crown Chart, changing to circular needle when there are too many sts to fit on dpns.

**Rnd 1:** \*K1, M1, p1; rep from \* 5 (6) more times = 18 (21) sts.

**Rnd 2:** \*K1, yo, k1, p1; rep from \* 5 (6) more times = 24 (28) sts.

**Rnd 3:** \*K2, yo, k1, p1; rep from \* 5 (6) more times = 30 (35) sts.

**Rnd 4:** \*K3, yo, k1, p1; rep from \* 5 (6) more times = 36 (42) sts.

**Rnd 5:** \*K5, M1, p1; rep from \* 5 (6) more times = 42 (49) sts.

**Rnd 6:** \*K2, k2tog, yo, k1, M1, p2; rep from \* 5 (6) more times = 48 (56) sts.

**Rnd 7:** \*K1, k2tog, yo, k2, M1, k1, p2; rep from \* 5 (6) more times = 54 (63) sts.

**Rnd 8:** \*K2tog, yo, k3, M1, k2, p2; rep from \* 5 (6) more times = 60 (70) sts.

**Rnd 9:** \*K5, M1, p1, k2, p2; rep from \* 5 (6) more times = 66 (77) sts.

**Rnd 10:** \*K1, yo, ssk, k2, p2, k1, yo, k1, p2; rep from \* 5 (6) more times = 72 (84) sts.

**Rnd 11:** \*K2, yo, ssk, k1, p2, k2, yo, k1, p2; rep from \* 5 (6) more times = 78 (91) sts.

**Rnd 12:** \*K3, yo, ssk, p2, k3, yo, k1, p2; rep from \* 5 (6) more times = 84 (98) sts.

**Rnd 13:** \*K5, p2; rep from \*.

Work 40 (48) rnds in Swedish Lace Pattern. Piece should meas approx 5.75 (6.75) in/ 14.5 (17) cm. If you have adjusted the length, make sure to end with either Rnd 4 or 8.

BO in pattern using Loosey Lacy BO (see instructions at end of pattern), or Eyelet Scallop BO as follows:

**Next rnd:** \*(K1, yo, k1, yo, k1) in next st (5 sts inc), sl 2 sts tog kwise, k1, p2sso, (2 sts decreased), (k1, yo, k1, yo, k1) in next st, p2; rep from \*.

BO all sts in pattern.

## Finishing

Adjust the holding yarn by undoing the slip knot, and snugging up the slack to tighten the ring of stitches. Grasp the loop and pull the tail through the wound-on sts.

Fasten off. Weave in ends.

# Baby Hat & Booties

Pattern 1200

## To Knit

### Booties

#### Sole

Crochet CO 8 (10) sts (see instructions at end of pattern).

Slip the first st of each row pwise, knit 28 (30) rows [14 (15) garter ridges], ending with a RS row; do not turn to work a WS row.

#### Sides

Rotate work 90 degrees clockwise. With a second dpn, pick up and k14 (15) st along side edge, picking up st in the outside half of each slip st, with a third dpn pick up and k8 (10) sts along the CO edge, then with fourth dpn, pick up and k14 (15) sts along rem side edge = 44 (50) sts. Join to work in the rnd. Place marker for beg of rnd. [10 (15) rnds].

\*Purl 2 (3) rnds, knit 2 (3) rnds; rep from \* once more. Purl 2 (3) rnds,

## Instep

Beg working back and forth across needle 1 for instep, dec 1 st at end of every row as follows:

### Instep set-up for size Newborn

**Row 1 = RS:** Needle 1, sl 1 pwise wyib, p1, k1, yo, k3, p1, ssk last st tog with first st of Needle 2, turn

= 9 sts on Needle 1, and 13 sts on Needle 2.

**Row 2 = WS:** Needle 1, sl 1 pwise wyif, k1, p1, ssp, yo, p2, k1, p2tog last st of with first st of Needle 4, turn = 9 sts on Needle 1, and 13 sts on Needle 2.

### Instep set-up for size 3-6 Months

**Row 1 = RS:** Needle 1, sl 1 pwise wyib, p1, k1, yo, k2, M1, k1, yo, k2, p1, ssk last st tog with first st of Needle 2, turn = 13 sts on Needle 1, and 14 sts on Needle 2.

**Row 2 = WS:** Needle 1, sl 1 pwise wyif, (k1, p2, yo, p2) 2 times, k1, p2tog last st with first st of Needle 4, turn = 15 sts on Needle 1, and 14 sts on Needle 2.

### Both sizes

**Row 3:** Needle 1, sl 1 pwise wyib, (p1, k3, yo, ssk) 1 (2) time(s), p1, ssk last st tog with first st of Needle 2, turn = 9 (15) sts on Needle 1, and 12 (13) sts on Needle 2.

**Row 4:** Needle 1, sl 1 pwise wyif, (k1, p5) 1 (2) time(s), k1, p2tog last st with first st of Needle 4, turn = 9 (15) sts on Needle 1, and 12 (13) sts on Needle 4. **Note:** stitch count remains the same on Needle 1 on Rows 5 - 19 and stitch counts are given for Needles 2 and 4 only.

**Row 5:** Needle 1, sl 1 pwise

wyib, (p1, k2, k2tog, yo, k1) 1 (2) time(s), p1, ssk last st tog with first st of Needle 2, turn = 11 (12) sts on Needle 2.

**Row 6:** Needle 1, sl 1 pwise wyif, (k1, p2, yo, p2tog, p1) 1 (2) time(s), k1, p2tog last st with first st of Needle 4, turn = 11 (12) sts on Needle 4.

**Row 7:** Needle 1, sl 1 pwise wyib, (p1, k2tog, yo, k3) 1 (2) time(s), p1, ssk last st tog with first st of





# Baby Hat & Booties

Pattern 1200

Needle 2, turn = 10 (11) sts on Needle 2.

**Row 8:** Needle 1, sl 1 pwise wyif, (k1, p5) 1 (2) time(s), k1, p2tog last st with first st of Needle 4, turn = 10 (11) sts on Needle 4.

**Row 9:** Needle 1, sl 1 pwise wyib, (p1, k1, yo, ssk, k2) 1 (2) time(s), p1, ssk last st tog with first st of Needle 2, turn = 9 (10) sts on Needle 2.

**Row 10:** Needle 1, sl 1 pwise wyif, (k1, p1, ssp, yo, p2) 1 (2) time(s), k1, p2tog last st with first st of Needle 4, turn = 9 (10) sts on Needle 4.

**Rows 11-18:** Rep Rows 3-10 = 5 (6) sts each on Needles 2 and 4.

**Row 19:** Rep Row 3, but do not turn = 9 (15) sts on Needle 1, and 4 (5) sts on Needle 2.

## Leg

### Size Newborn only

**Next Row:** K1, M1, k2, p1, \*k2, M1, k2, p1; rep from \* once more, k2, M1, k1, pick up 1 st in row below and knit tog with next st to close gap = 30 sts.

### Size 3-6 Months only

**Next Row:** K4, \*p1, k5, rep from \* once more, p1, k4, pick up 1 st in row below and knit tog with next st to close gap = 36 sts.

### Both sizes

Join to work in the rnd. Place marker for beg of rnd. Work from instructions below or from Leg Chart.

**Rnd 1:** \*P1, k5; rep from \* 4 (5) more times.

**Rnd 2:** \*P1, k2, k2tog, yo, k1; rep from \* 4 (5) more times.

**Rnd 3 (eyelet rnd):** Sl 1 wyib, \*M1, k1, k2tog, yo k1, ssk; rep from \* 4 (5) more times; work ssk at end of last rep using last st of rnd and slipped st from beg of rnd, and reposition beg-of-rnd marker after ssk. **Note:** you may use a yarn over instead of the M1 increase on this round but make sure the hole is not too big, especially for the smaller size.

**Rnd 4:** \*P1, k2tog, yo, k3; rep from \* 4 (5) more times.

**Rnd 5:** Rep Rnd 1.

**Rnd 6:** \*P1, k1, yo, ssk, k2; rep from \* 4 (5) more times.

**Rnd 7:** \*P1, k2, yo, ssk, k1; rep from \* 4 (5) more times.

**Rnd 8:** \*P1, k3, yo, ssk; rep from \* 4 (5) more times.

**Rnds 9 and 10:** Rep Rnds 1 and 2.

**Rnd 11:** \*P1, k1, k2tog, yo, k2; rep from \* 4 (5) more times.

**Rnds 12-17:** Rep Rnds 4-9.

**Rnds 18-21 (25):** Rep Rnds 10-13 (17).

If you have adjusted the length, make sure to end with either Rnd 4 or 8.

BO in pattern using Loosey Lacy BO (see instructions at end of pattern), or Eyelet Scallop BO as follows:

**Next rnd:** \*(K1, yo, k1, yo, k1) in next st (5 sts made from 1), sl 2 sts tog kwise, k1, p2ssso, (2 sts decreased), (k1, yo, k1, yo, k1) in next st, p2; rep from \*.

BO all sts in pattern.

## Finishing

Weave in ends.

### Size 3-6 months I-cords (make 2)

With 1 dpn CO 2 sts. Do not turn. \*Holding needle in your left hand, slide sts to the right end of needle, pull yarn tight across the back of the 2 sts, with second dpn, k2, do not turn; rep from \* until cord reaches desired length; approx 26 in/ 66 cm will be long enough to make a bow that will knot. On the last row, k2tog, break yarn and pull through rem st. Weave in ends. If desired, make a third cord to have on hand as a spare.

### Size Newborn crochet cords (make 2)

With crochet hook, make a chain approx 18 in/ 46 cm long. Fasten off. Weave in ends along back of chain. If desired, make a third cord to have on hand as a spare.

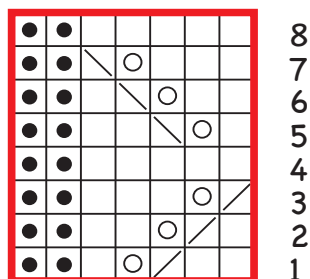
### Both sizes

Beg and end at center front, thread cord through eyelet rnd of each bootie.

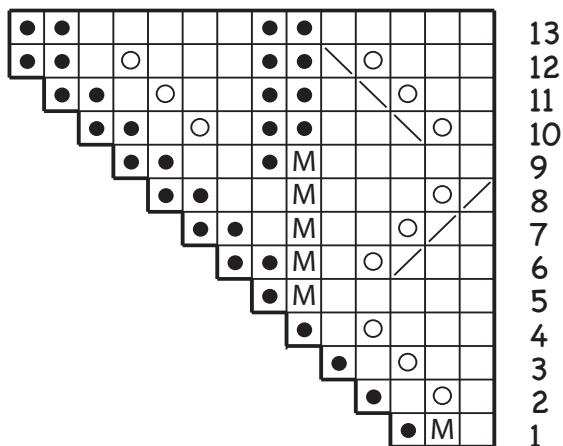
# Baby Hat & Booties

Pattern 1200

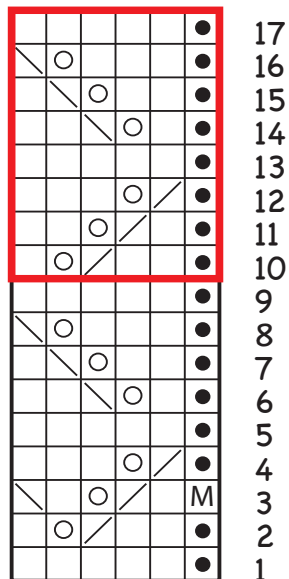
## Swedish Lace



## Crown Pattern



## Leg Chart



## Stitch Key

- k on RS, p on WS
- p on RS, k on WS
- yo
- k2tog on RS, p2tog on WS
- ssk on RS, ssp on WS
- Make 1 using backward loop CO
- repeat box

On Row 3 of Leg Chart,  
you may wish to use a yarn over  
instead of the M1 increase  
(see note in pattern).

# Baby Hat & Booties

Pattern 1200



## Abbreviations

|          |  |
|----------|--|
| approx   | = approximately                          |
| beg      | = begin/beginning                        |
| BO       | = bind off                               |
| CO       | = cast on                                |
| dpn(s)   | = double pointed needle(s)               |
| k        | = knit                                   |
| kwise    | = knitwise                               |
| k2tog    | = knit 2 together                        |
| M1       | = make 1 using backward<br>loop increase |
| p        | = purl                                   |
| pwise    | = purlwise                               |
| rep      | = repeat                                 |
| rnd/rnds | = round/rounds                           |
| RS       | = right side                             |
| sl       | = slip                                   |
| st/sts   | = stitch/stitches                        |
| WS       | = wrong side                             |
| wyib     | = with yarn in back                      |
| wyif     | = with yarn in front                     |



# Baby Hat & Booties

Pattern 1200

## Special Techniques

### Winding On Cast-on

This cast-on technique uses the tail end of the working yarn to hold the open loops of stitches as they are made by winding the yarn around both the needle and the tail; make sure to keep the stitches loose enough so the tail end loop can be extended as stitches are added.

1. Tie a slip knot at the tail end of the working yarn; this knot does not count as a stitch. Slide the knot onto the right hand needle and tighten it. Double the tail end and hold it parallel and next to the needle in the right hand, so the looped end extends four or five inches beyond the tip of the needle.
2. Bring the working yarn forward from beneath the needle, up across the front, then down behind the needle; one stitch has been made. Note: Make sure the stitch is oriented with the right leg in front of the needle and the left leg behind; this will ensure the stitches are not twisted when working the first row.
3. \*Continue wrapping the working yarn around both needle and the tail end until you have one wrap for each stitch to be cast on. When the holding string is covered you will need to lengthen the loop. Keeping tension on the working yarn, extend the looped end of the tail end by drawing the loop out to the left, making sure to pull on the side of the loop that is not knotted. Allow the newly formed stitches to slide along the loop toward the knot. Repeat from \* until the desired number of stitches have been formed.
4. When all the stitches have been wound on, transfer the needle to the left hand, keep the yarn held tightly to the back of the needle and work the end wrap as the first stitch of the first row (Note: working the first stitch anchors the cast-on, which can be slippery). Adjust the tail end by drawing the loop through and tying it to the other end of the holding string so that the open stitches do not drop off as the stitches are worked in the opposite direction.

### Loosey Lacy Bind-Off

This two row finish adds extra yarn to each stitch by creating yarn overs, which are dropped on the next row. The elongated stitches keep the lace loose and allows it to scallop. This must be worked on a double pointed or circular needle.

1. \*Yarn over, work 1 stitch in pattern; rep from \* around. Cut yarn, leaving a 6in/ 15cm tail. Do not turn. Slide the stitches back to the right end of needle.
2. Without knitting, bind off as follows, \*drop yarn over, slip 1 stitch, drop next yarn over, insert right needle knit-wise into next stitch and pull through elongated stitch on right needle. Rep from \* to the end. When all stitches have been bound off, use the tail at end of round to fasten off the last stitch.

### Crochet Cast-on

The crochet cast-on uses a crochet hook and knitting needles, and creates an edge that mirrors the bind-off. Chain stitches are worked around the knitting needle and become the stitches for the first row.

1. Make a slip knot and place on the crochet hook. Holding the knitting needle in the left hand with yarn underneath, hold the yarn over the index finger as you would for crochet.
2. \*Bring the crochet hook in front of the knitting needle and chain one around the knitting needle. (Holding the hook at a right angle to the knitting needle will make it easier to work each stitch around the knitting needle.)
3. Lift the yarn over the tip of the knitting needle and place it behind the needle again = one stitch is cast on. Repeat from \* until you have cast on one less stitch than desired; the loop on the crochet hook is the last stitch. Turn the crochet hook ¼-turn to the right and place the loop on the knitting needle.