

Reversible River Scarf

Pattern 3029



**Misti
Alpaca**

www.mistialpaca.com

Page 1 of 3

Reversible River Scarf

Designed by: Charles Voth
Skill level: Intermediate
Pattern 3029

Finished measurements

	Depth	Span
Scarf	10 in/25 cm	approx 60 in/ 152 cm

Yarn

Misti Alpaca Tonos Worsted (50% Baby Alpaca, 50% Merino wool, 100 g = approx 218 yards, shown in TW38 Flames): 2 hanks

Needles

US 8 (5 mm) straight needles,

Notions

Yarn Needle

Gauge/Tension

Gauge is not essential for this project.

To Knit:

Cast on 40.

Rows 1-6: Wyif, sl 1 pwise, k39.

Row 7: Wyif, sl 1, k3, [yo, k2] × 2, [yo, ssk, k1] × 3, k17, [ssk] × 2, k2.

Even Rows 8 to 18: Wyif, sl 1 pwise, k39.

Row 9: Wyif, sl 1, k3, [yo, k3] × 2, [yo, ssk, k1] × 3, k15, [ssk] × 2, k2.

Row 11: Wyif, sl 1, k4, [yo, k4] × 2, [yo, ssk, k1] × 3, k12, [ssk] × 2, k2.

Row 13: Wyif, sl 1, k5, [yo, k5] × 2, [yo, ssk, k1] × 3, k9, [ssk] × 2, k2.

Row 15: Wyif, sl 1, k6, [yo, k6] × 2, [yo, ssk, k1] × 3, k6, [ssk] × 2, k2.

Row 17: Wyif, sl 1, k7, [yo, k7] × 2, [yo, ssk, k1] × 3, k3, [ssk] × 2, k2.

Row 19: Wyif, sl 1, k8, double yo, ssk, [k6, double yo, ssk] × 2, [sk1, double yo, ssk] × 2, k1, [ssk] × 2, k2. (43 sts)

Row 20: Wyif, sl 1, k5, [(k1, p1) in double yo, k2] × 3, k5, (k1, p1) in double yo, k7, (k1, p1) in double yo, k9.

Row 21: Wyif, sl 1, k1, [ssk] × 3, knit to end of row. (40 sts)

Even Rows 22 to 32: Wyif, sl 1 pwise, k39.

Row 23: Wyif, sl 1, k1, [k2tog] × 2, k16, [k2tog, yo, k1] × 3, [k2, yo, k1] × 2, k3.

Row 25: Wyif, sl 1, k1, [k2tog] × 2, k13, [k2tog, yo, k1] × 3, [k3, yo, k1] × 2, k4.

Row 27: Wyif, sl 1, k1, [k2tog] × 2, k10, [k2tog, yo, k1] × 3, [k4, yo, k1] × 2, k5.

Row 29: Wyif, sl 1, k1, [k2tog] × 2, k7, [k2tog, yo, k1] × 3, [k5, yo, k1] × 2, k6.

Row 31: Wyif, sl 1, k1, [k2tog] × 2, k4, [k2tog, yo, k1] × 3, [k6, yo, k1] × 2, k7.

Row 33: Wyif, sl 1, k1, [k2tog] × 2, [k1, k2tog, double yo] × 3, [k6, k2tog, double yo] × 2, k9. (43 sts)

Row 34: Wyif, sl 1, k8, [(k1, p1) in double yo, k7] × 2, [(k1, p1) in double yo, k2] × 3, k4.

Row 35: Wyif, sl 1, k32, [k2tog] × 3, k2. (40 sts)

Row 36: Wyif, sl 1 pwise, k39.

Row 37: Rep Row 7.

Row 38: Rep Row 36.

Rep Rows 9 to 38 until scarf measures 60" / 152cm.

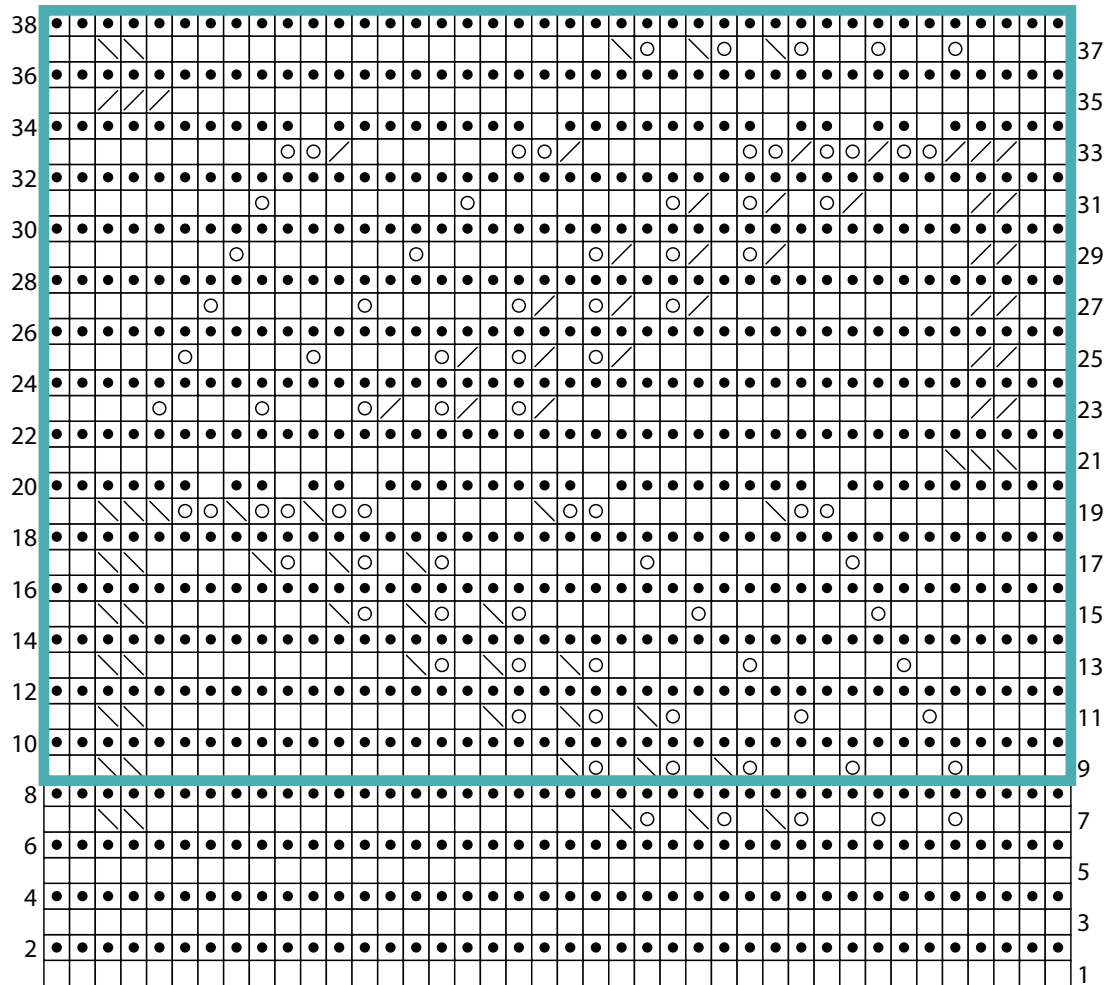
Reversible River Scarf

Designed by: Charles Voth
Skill level: Intermediate
Pattern 3029

Finishing

Weave in ends. Block to remove curl.

Chart



Abbreviations

approx = approximately
k = knit
k2tog = knit 2 together
pwise = purlwise
rem = remain/remaining
rep = repeat
RS = right side
ssk = slip 2 sts knitwise, k tog through back loops.

st/sts = stitch/stitches
tog = together
WS = wrong side
wyf = with yarn in front

<input type="checkbox"/>	RS: k; WS: p
<input checked="" type="checkbox"/>	WS: k
<input type="checkbox"/>	yo
<input type="checkbox"/>	k2tog
<input type="checkbox"/>	ssk

Stitch Key